

OPTIONAL ACCESSORY

0.5X auxiliary objective	Code: ISD-V-OB05X Working distance: 175mm Magnification: 16.5~97.5X (on 19" monitor)
2X auxiliary objective	Code: ISD-V-OB2X Working distance: 36mm Magnification: 66~390X (on 19" monitor)
Probe	Code: ISD-V-PROBE Includes Ø2mm and Ø3mm styli, Ø25mm calibration ball
Vision measuring system with coaxial light lens	Code: ISD-V150ACL, ISD-V250ACL, ISD-V300ACL, ISD-V400ACL

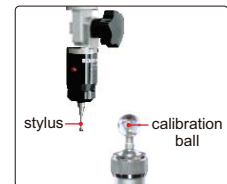


STANDARD DELIVERY

Main unit	1pc
Video card with dongle	1pc
Software disc	1pc
Computer	1pc
19.5" Display	1pc
Calibration glass chart	1pc
Laser positioner	1pc
Clay	1pc
Foot switch	1pc
Anti-dust cover	1pc

SPECIFICATION

Code	ISD-V150A	ISD-V250A	ISD-V300A	ISD-V400A
Measuring range (X×Y×Z)	150×100×200mm	250×150×200mm	300×200×200mm	400×300×200mm
Stage size	354×228mm	450×280mm	500×330mm	606×466mm
Stage glass size	210×160mm	306×196mm	350×250mm	450×350mm
Resolution of X/Y/Z axis	0.5μm			
Accuracy of X/Y axis	≤(2.5+L/100)μm (L is the measuring length in mm)			
Repeatability of X/Y axis	2μm			
Objective	0.7X~4.5X (zoom)			
Working distance	92mm			
Magnification	33X~195X (on 19" monitor)			
Camera	1/3" color CCD, 1.5M pixel			
Illumination	surface and contour with adjustable LED			
Max. height of workpiece	160mm			
Max. weight of workpiece	20kg			
Operation system	Windows 7			
Drive method	manual			
Power supply	110/220V, 50/60Hz			
Dimension (L×W×H)	560×540×850mm	760×600×900mm	760×600×900mm	970×670×940mm
Weight	100kg	120kg	140kg	240kg



probe (optional), includes Ø2mm and Ø3mm styli, Ø25mm calibration ball, measuring accuracy is 10μm



software CD (included)



lens with coaxial light (optional)

SOFTWARE

- **Operation system:** Windows 7
- **Language:** English
- **Single measuring tools:**



measure coordinate of point



measure center coordinate, diameter and area of circle



measure distance between two points



measure length and diameter of arc



measure angle of two lines



measure distance of two elements



measure length, width and diameter of key slot



measure width and diameter of ring



measure length of open curve



measure length and area of close curve



measure focus distance of surface

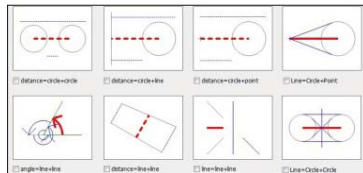


measure length, width and area of rectangle



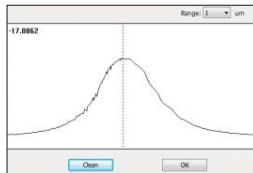
measure center coordinate and axis length of ellipse

■ Combined measuring tools:

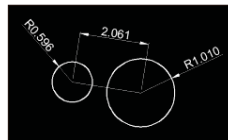


measure distance and angle of two elements

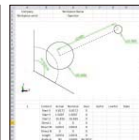
■ Focus indicator:



■ Data export to CAD, EXCEL and WORD:



CAD

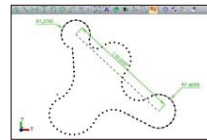


EXCEL



WORD

■ Contour scanning:



■ Coordinate transfer:



■ Edge-detection:

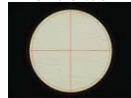
Point tool



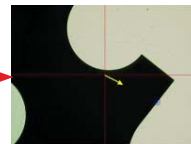
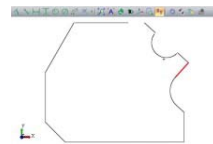
Box tool



Circle tool



■ CAD measuring:



Input CAD drawing and set reference, then move the stage to make the target box in the center of crosshair, the software will do automatic measurement

■ Profile detection:

