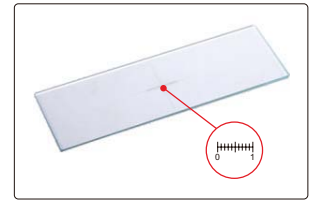


DIGITAL CAMERA CODE ISM-D500



connector Ø23.2/Ø30mm



calibration rule (graduation 0.1mm)

- Inserted into eyepiece tube or camera connector of microscopes
- Supplied with software

SPECIFICATION

Sensor	1/2.5" CMOS
Pixel	5M
Resolution	2592×1944 or 1296×972
Frame rate	3fps (2592×1944) 12fps (1296×972)
Exposure	manual or auto, exposure time is adjustable
SNR	41dB
Power supply	USB
Weight	400g

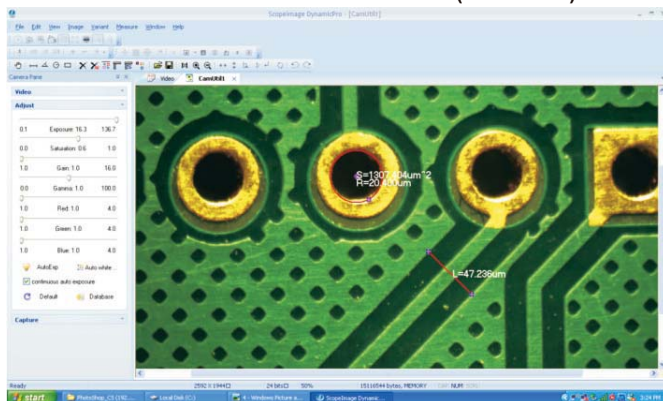
STANDARD DELIVERY

Main unit	1pc
Adapter 0.45X	1pc
Calibration rule (graduation 0.1mm)	1pc
Connector Ø23.2/Ø30mm	1pc
USB cable	1pc
Software disc	1pc

OPTIONAL ACCESSORY

Connector Ø23.2/Ø30.5mm	ISM-DCA-CON
-------------------------	-------------

SOFTWARE FOR DIGITAL CAMERA (INCLUDED)



Measuring Tools:

- measure distance between two points
- measure angle with three points
- measure circle
- measure rectangle
- calibration

- Can take pictures and videos
- Exposure/gain/gamma/saturation/colour adjustment
- Image process feature: zoom in/out, image flip and so on